

Social Development of Adolescents: Topics and Members

Bullying and Victimization

- Jan Kornelis Dijkstra
- Gijs Huitsing
- Jelle Sijtsema
- René Veenstra

Aggression, Delinquency, and Truancy

- Jan Kornelis Dijkstra
- Kim Pattiselanno
- Jelle Sijtsema
- René Veenstra

Peer Acceptance, Rejection, and Popularity

- Jan Kornelis Dijkstra
- Gijs Huitsing
- Kim Pattiselanno
- Britta Rüschoff
- René Veenstra

Relationships with Romantic Partners and Parents

- Katya Ivanova
- Anke Munniksma
- Miranda Sentse

Interethnic Relations

- Anke Munniksma
- Tinka Veldhuis



Jan Kornelis Dijkstra



Gijs Huitsing



Jelle Sijtsema



Kim Pattiselanno



René Veenstra



Anke Munniksma



Britta Rüschoff



Tinka Veldhuis



Miranda Sentse



Katya Ivanova

Social Development of Adolescents: Data Projects

TRAILS (Ongoing from 2000)

- Longitudinal study following the social development of adolescents
- Youth ($n \approx 2230$) from age 10-12 to 24
- Respondents: youth, parents, teachers, peers
- Data: social, psychological and biological factors
- More information: www.trails.nl

The Arnhem School Study (2006-2010)

- Longitudinal study on ethnic integration of (pre-)adolescents
- Youth followed from primary ($n \approx 750$) to secondary school ($n \approx 1300$)
- Respondents: youth, parents, teachers, peers
- Data: social networks, ethnic outgroup attitudes, (anti)social behaviors
- Contact: t.h.stark@rug.nl, a.munniksma@rug.nl

Kiva (Ongoing from 2008)

- Monitoring anti-bullying program Finland (Christina Salmivalli)
- Youth ($n \approx 8000$) at 78 schools in all five provinces of Finland
- Respondents: youth, teachers, peers
- Data: social networks, participant roles bullying, psychosocial adjustment
- From 2012 also implemented in the Netherlands (including Kiva+)
- More information: www.kivakoulu.fi (Finland); kiva@rug.nl (Netherlands)

SNARE: Social Network Analysis of Risk behavior in Early adolescence (2011 – 2013)

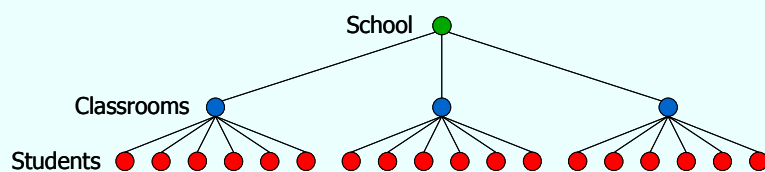
- Longitudinal study on group dynamics of risk behaviors, status, social cliques
- Middle school students ($n \approx 1200$)
- Data: complete social networks of two secondary schools
- More information: www.snarestudy.com

Social Development of Adolescents: Methods

Multilevel Analysis

Regression analyses taking *interdependencies* within groups and *variability* between groups (e.g. school classes) into account.

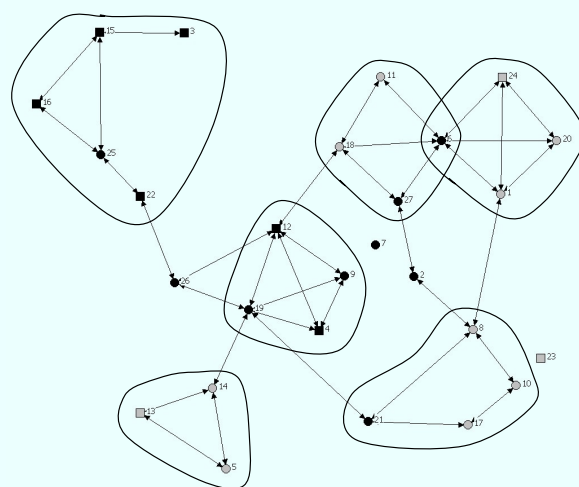
Example of a multilevel structure:



Social Network Analysis

Analyses of social networks and behavior of actors taking the network structure (and dynamics) into account.

Example of a social network:



Different social network methods

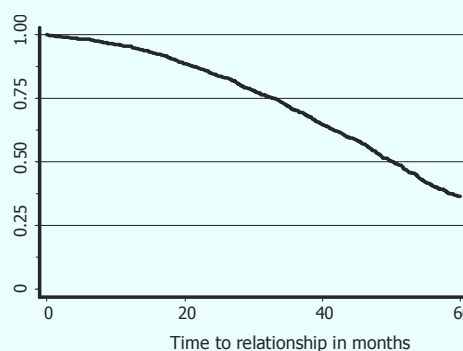
- P_2 : dyadic relations
- Exponential Random Graph Modeling (i.e., ERGM, P^*): whole networks
- SIENA: whole networks over time.

Event History Analysis

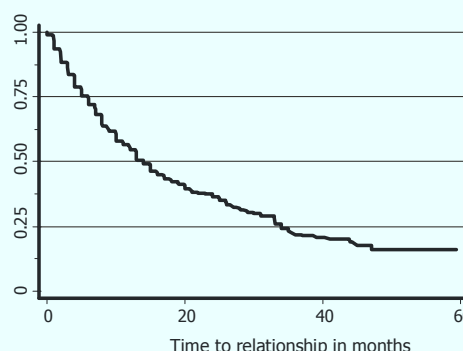
Statistical modelling and analysis of the *time* it takes for an event to occur.

It allows to compare this elapsed time between groups, to examine how different explanatory variables affect it, and to include time-varying covariates (e.g., education, age).

Example of survival curves:



Survival Estimates for Time to **First** Romantic Relationship



Survival Estimates for Time to **Second** Romantic Relationship.



Social Development of Adolescents: Research and Educational Opportunities

Educational Opportunities

- Master of Science degree: Behavioral and Social Sciences
- Website: www.rug.nl/gmw/rema

Research Opportunities

- Research visits in our lab group (contact: d.r.veenstra@rug.nl)
- Regular recruitment of PhD Candidates and Postdocs through the Interuniversity Center for Social Science Theory and Methodology (ICS)
- Website: www.ics-graduateschool.nl

For more information:

- <http://www.gmw.rug.nl/~veenstra/>

Presentations at the SRCD meeting

Bullying and Victimization

- Gijs Huitsing 1-167 (Th 2:30pm), 2-082 (Fr 10:20am), 3-156 (Sat 2:30pm)
- René Veenstra 2-082 (Fr 10:20am)

Peer Acceptance, Rejection, and Popularity

- Jan Kornelis Dijkstra 3-034 (Sat 8:20am), 3-157 (Sat 2:30pm)

Aggression, Delinquency, and Truancy

- Jelle Sijtsema 1-045 (152) (Th 10:00am)

Relationships with Romantic Partners and Parents

- Katya Ivanova 1-082 (Th 10:20am), 2-087 (169) (Fr 12:10pm)
- Anke Munniksma 2-087 (150) (Fr 12:10pm)

Interethnic Relations

- Anke Munniksma 3-041 (148) (Sat 10:00am)